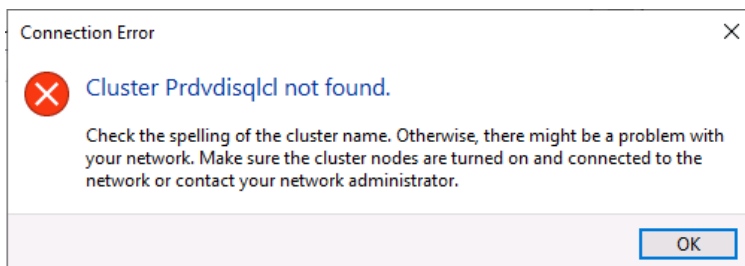
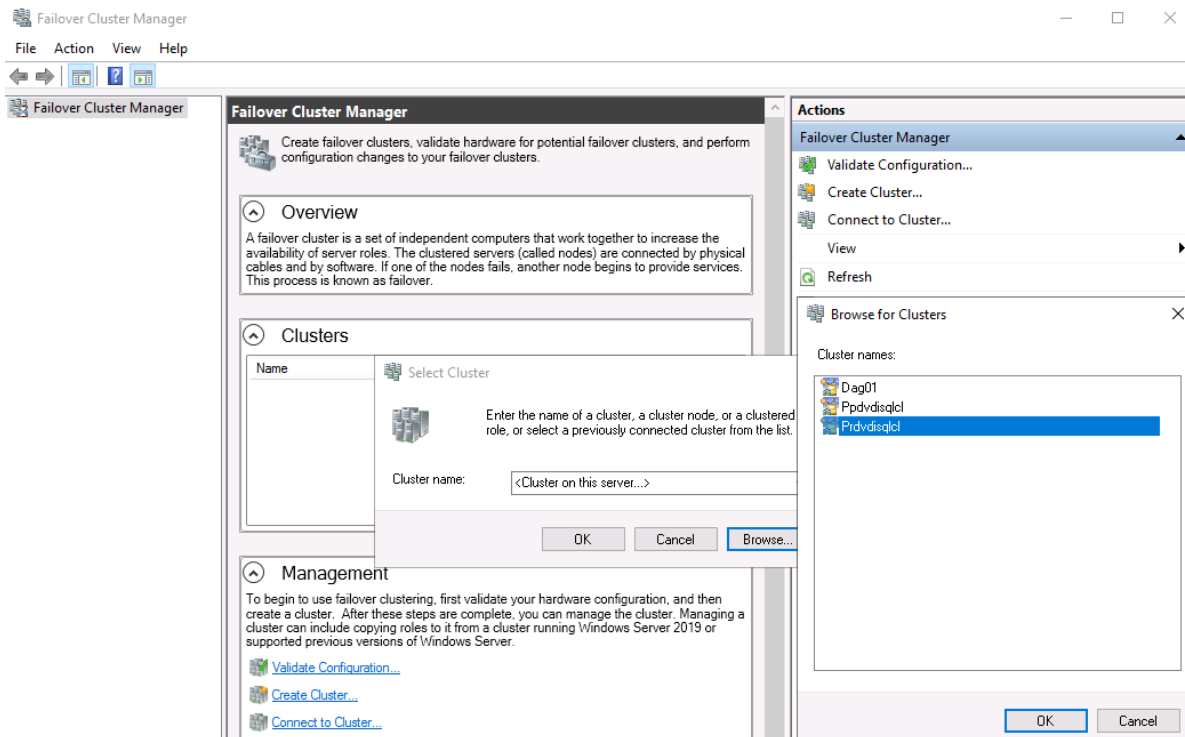
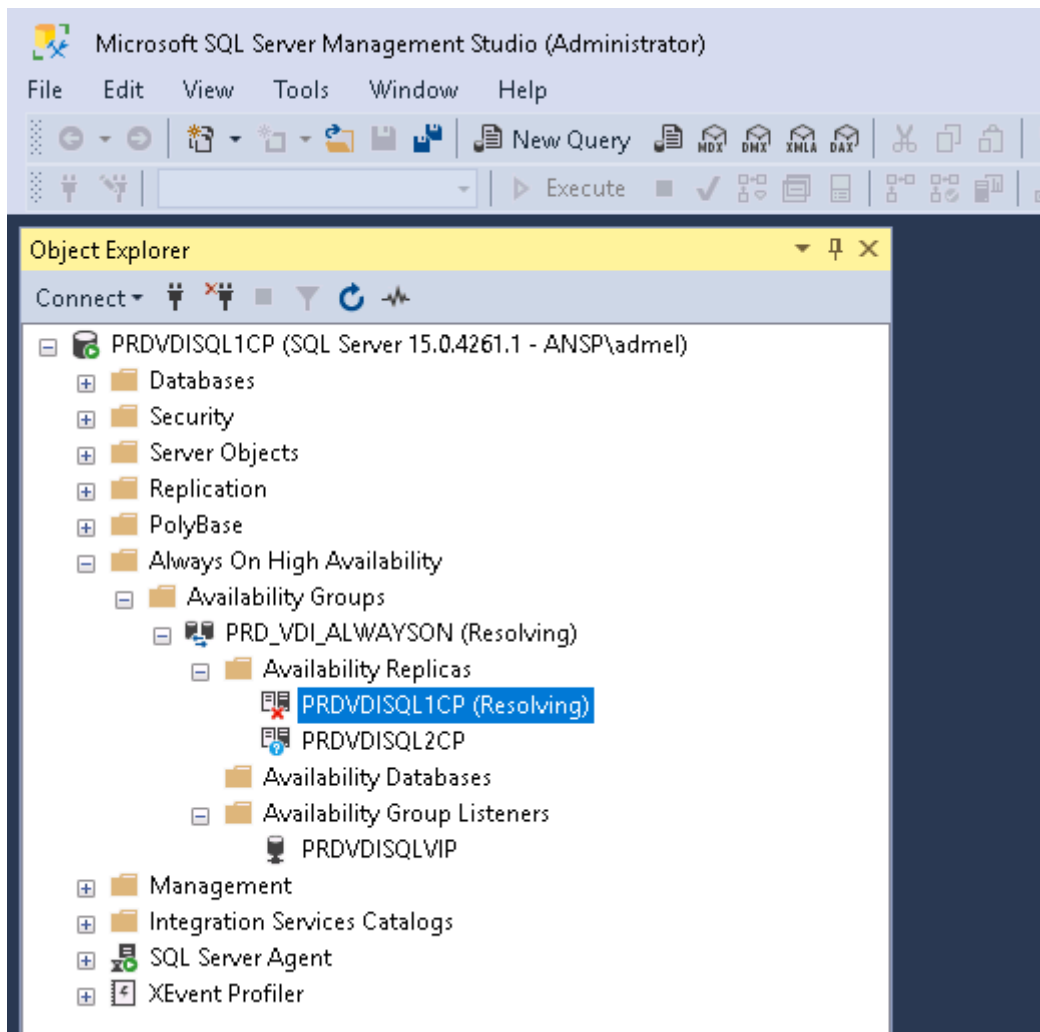
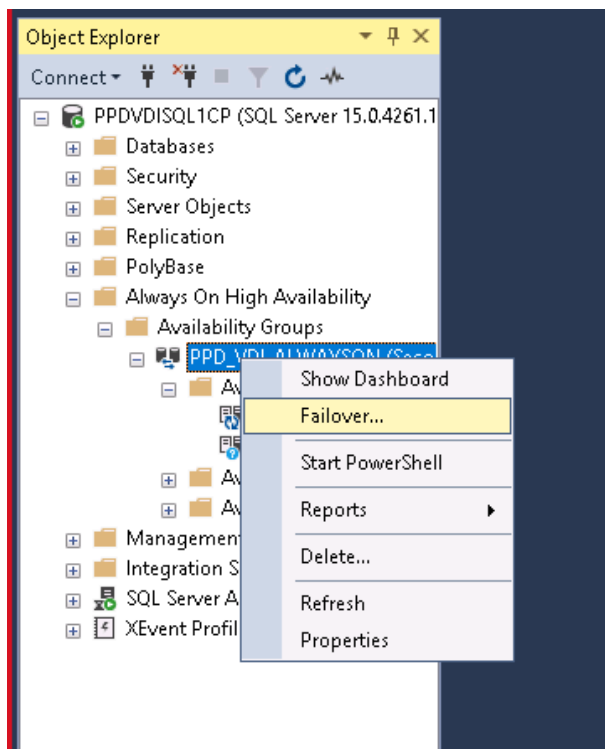


PB SQL FAILOVER

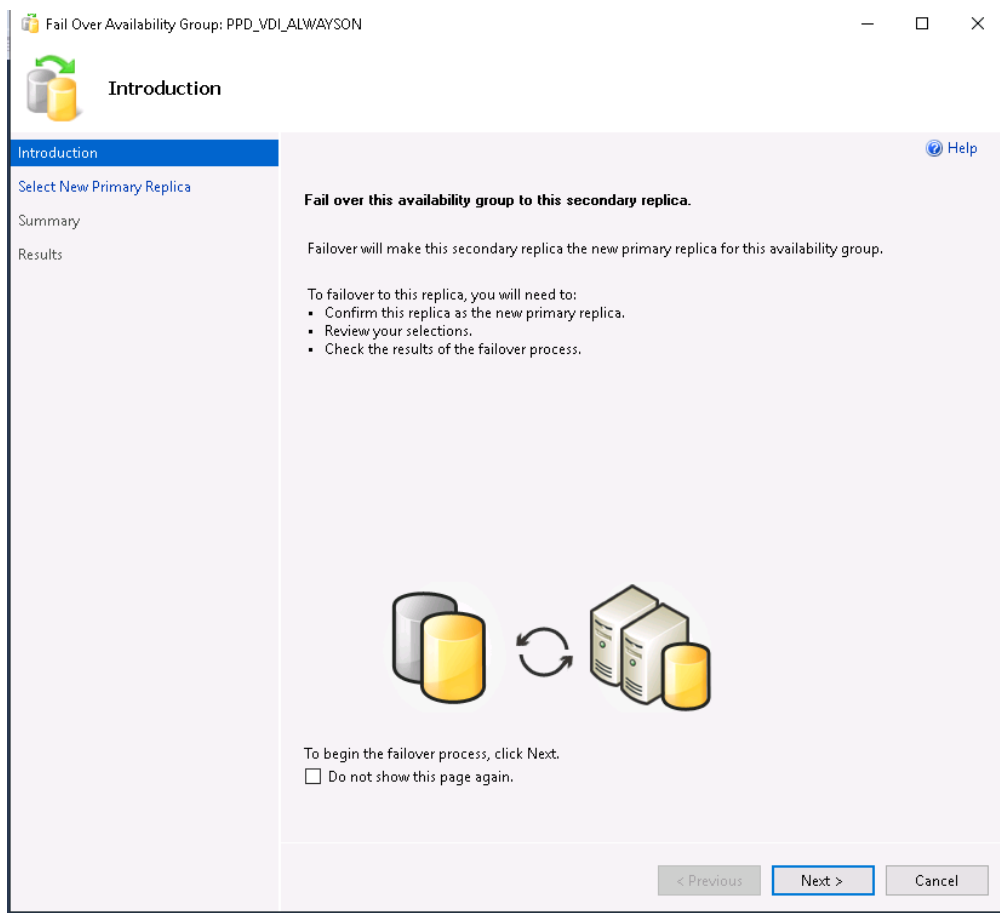




Clic droit --> Failover...



Next



Next



Select New Primary Replica

Introduction

Select New Primary Replica

Summary

Results

Help

Select the new primary replica for this availability group.

Current Primary Replica: PPDVDISQL2CP
Primary Replica Status: Synchronous commit and Unknown
Quorum Status: Normal Quorum

Choose new primary replica:

	Server Instance	Availability Mode	Failover Mode	Failover Read...	Warnings	R
<input checked="" type="checkbox"/>	PPDVDISQL1CP	Synchronous co...	Automatic	No data loss		Se

< >

Refresh

< Previous

Next >

Cancel

Finish



Summary

Introduction

Select New Primary Replica

Summary

Results

Help

Verify the choices made in this wizard.

Click Finish to perform the following actions:

- Current Primary Replica: PPDVDISQL2CP
- New Primary Replica: PPDVDISQL1CP
- Failover Actions: No data loss
- Affected Databases
 - PPDLogging
 - PPDReporting
 - PPDSite
 - PPDWem

Script ▼

< Previous

Finish

Cancel



Progress

Introduction

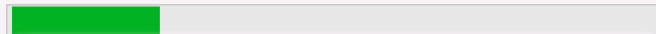
Select New Primary Replica

Summary

Results

Help

Performing manual failover to secondary replica 'PPDVDISQL1CP'

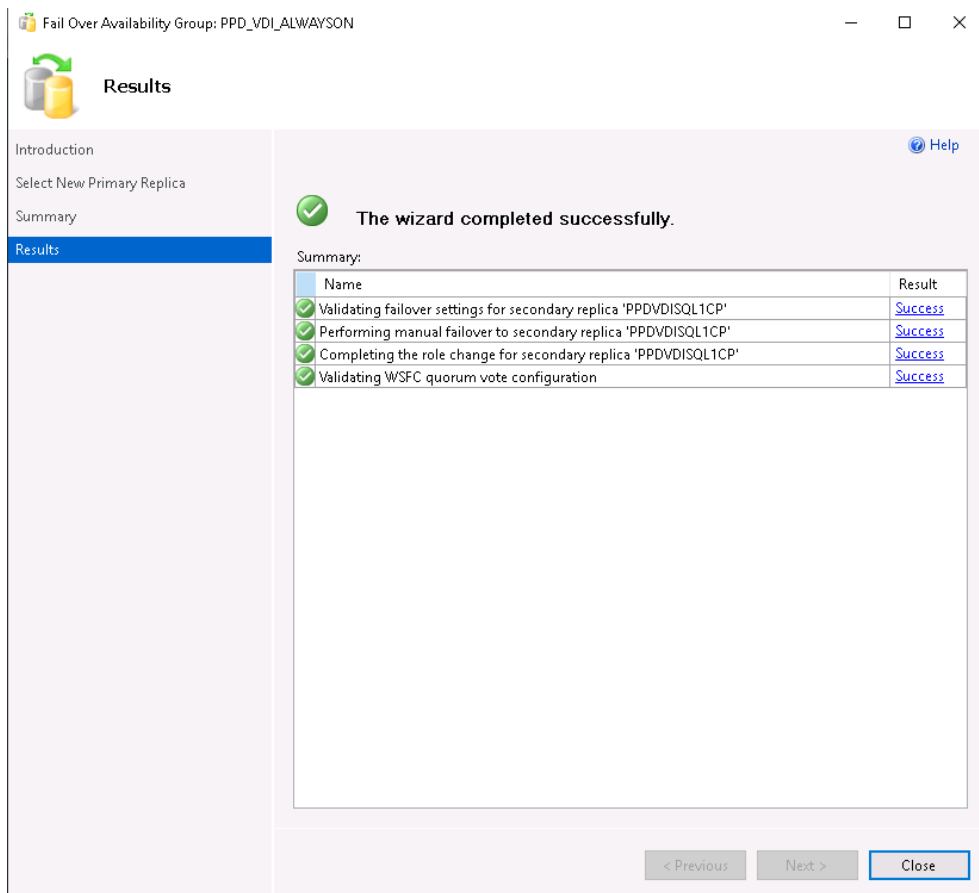


More details

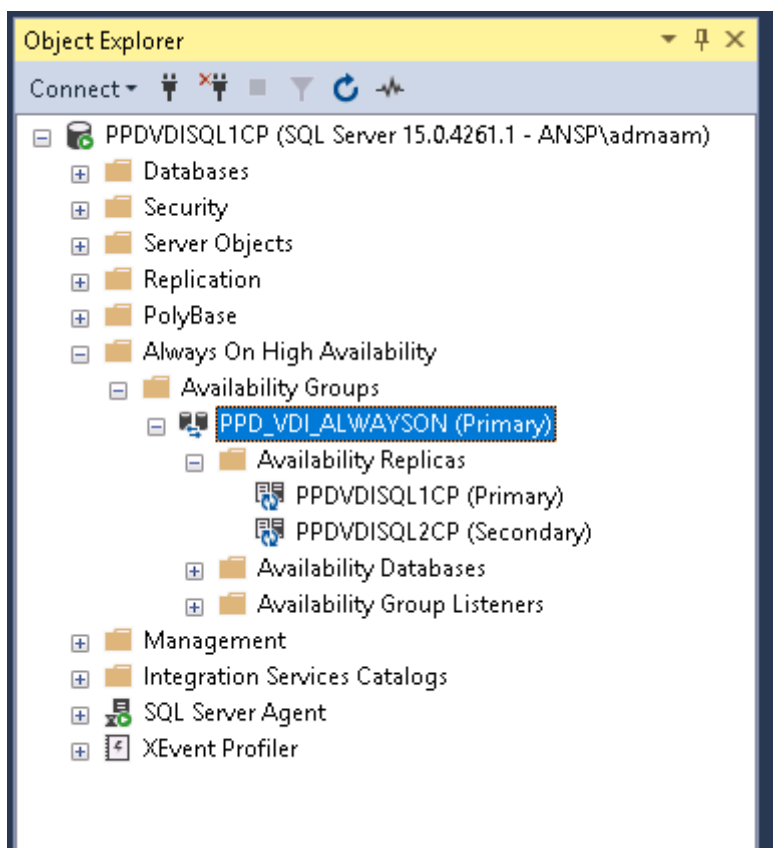
< Previous

Next >

Cancel



Vérifier que le 1 est bien passé en Primary ainsi que le 2 en Secondary



Revision #1

Created 31 October 2024 22:27:05 by Cavallone

Updated 31 October 2024 22:29:26 by Cavallone