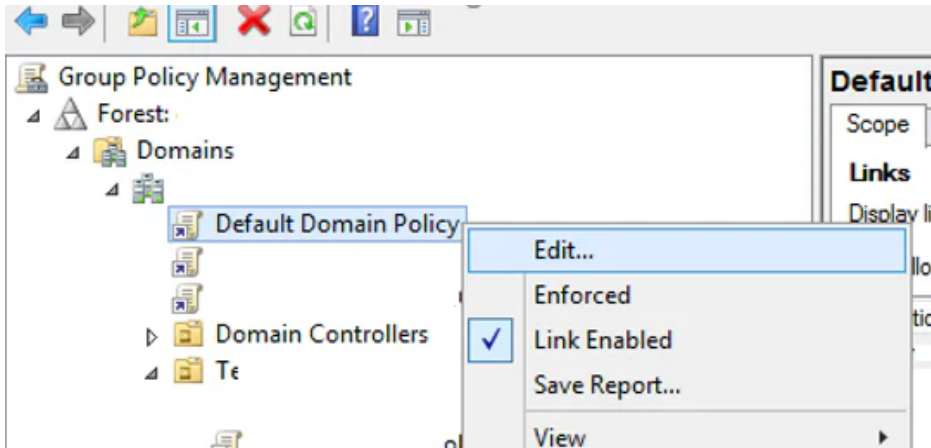


# Active Directory

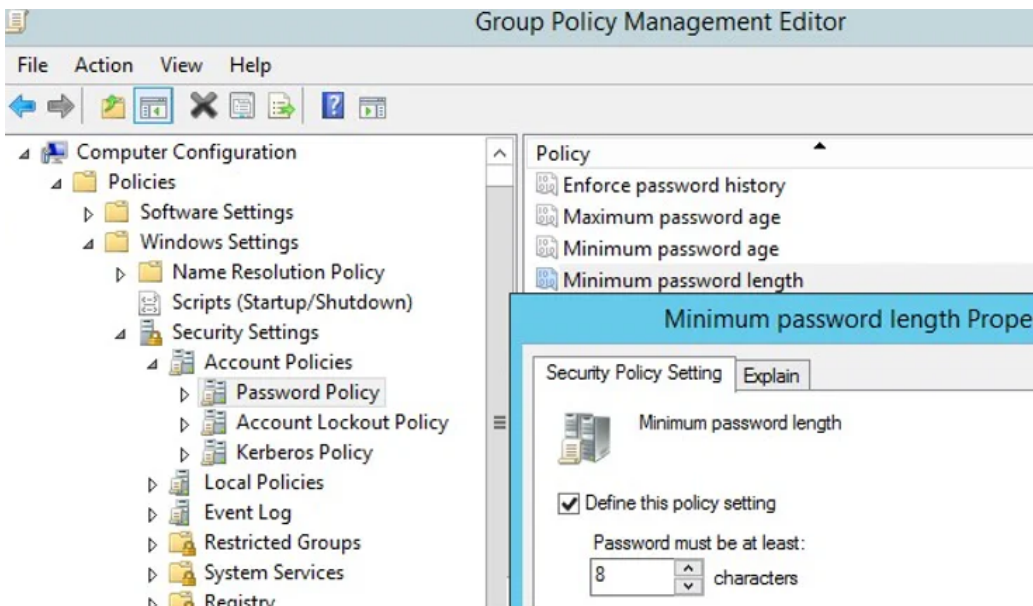
- GPO STRATEGIES MDP
- Modification des permissions du compte AD DS connector pour la synchronisation de hashage de mot de passe

# GPO STRATEGIES MDP

accédez à votre outil de gestion des stratégies de groupes, Group Policy Management, et rendez-vous sur les onglets Domains > Default Domain Policy



Computer Configuration > Policies > Windows Settings > Security Settings > Password Policy.



Autre interface

Password Settings  
Directly Applies To  
Extensions

## Password Settings

Name: \* Politiques Users

Precedence: \* 1

☒ Enforce minimum password length  
Minimum password length (characters): \* 10

☒ Enforce password history  
Number of passwords remembered: \* 2

☒ Password must meet complexity requirements

☐ Store password using reversible encryption

☒ Protect from accidental deletion

Description:

### Password age options:

☒ Enforce minimum password age  
User cannot change the password within (days): \* 1

☒ Enforce maximum password age  
User must change the password after (days): \* 90

☒ Enforce account lockout policy:  
Number of failed logon attempts allowed: \* 3

Reset failed logon attempts count after (mins): \* 5

Account will be locked out

☒ For a duration of (mins): \* 5

☐ Until an administrator manually unlocks the account

## Directly Applies To

Name	Mail

Add...

Remove

## Extensions

More Information

OK

Cancel

# Modification des permissions du compte AD DS connector pour la synchronisation de hashage de mot de passe

Le module RSAT-AD-Tools est nécessaire pour exécuter les commandes.

Commande pour installer le module via powershell :

```
Install-WindowsFeatureRSAT-AD-Tools
```

Pour utiliser ADSyncConfig, chargez le module :

```
Import-Module"C:\Program Files\Microsoft Azure Active Directory Connect\AdSyncConfig\AdSyncConfig.psm1"
```

Vérifiez si les modules sont bien chargés :

```
Get-Command -ModuleAdSyncConfig
```

To set permissions for the AD DS Connector account when using Password Hash Synchronization, run:

```
Set-ADSyncPasswordHashSyncPermissions -ADConnectorAccountName<String> -  
ADConnectorAccountDomain<String> [<CommonParameters>]
```

Dans notre cas, la commande suivante avait été lancée pour cxpm :

```
Set-ADSyncPasswordHashSyncPermissions -ADConnectorAccountName "zzAADConnect" -  
ADConnectorAccountDomain cxpm.local
```

<https://docs.microsoft.com/en-us/azure/active-directory/hybrid/how-to-connect-configure-ad-ds-connector-account>

```
=====
=                                     =
=      Password Hash Synchronization General Diagnostics      =
=                                     =
=====

AAD Tenant - cxpm.onmicrosoft.com
Password Hash Synchronization cloud configuration is enabled

AD Connector - cxpm.local
Password Hash Synchronization is enabled

Directory Partitions:
=====
Directory Partition - cxpm.local
Password Hash Synchronization agent is continuously getting failures for domain "cxpm.local"
Please check 611 error events in the application event logs for details
The latest 611 error event for the domain "cxpm.local" is generated at: 08/23/2022 10:45:34 UTC

AD Connector account had a Password Hash Synchronization permission problem for the domain "cxpm.local" at: 08/2
3/2022 10:45:34 UTC
Please see: https://go.microsoft.com/fwlink/?linkid=847234
Please check 611 error events in the application event logs for details

Last successful attempt to synchronize passwords from this directory partition started at: 8/22/2022 2:02:04 AM
UTC and ended at: 8/22/2022 2:02:04 AM UTC

Only Use Preferred Domain Controllers: False
Checking connectivity to the domain...
Domain "cxpm.local" is reachable
```